



Centre Hinged columns

A.D Coote & Co. manufacture a range of centre hinged columns that do away with the need of cherry pickers or climbing rungs meaning lower maintenance costs. These columns are manufactured with an apron that skirts its base section and has a hinge pin centrally located. Upon removal of the apron securing bolt the column can be tilted fully to allow easy access to maintain the fittings.

Our standard columns are base plate mounted however direct burial designs are available on request although these are limited in height to ten and a half metres.

All of our hinged columns come with one standard access door, base plate or cable entry and a spigot to suit a head frame or light fitting. They are also hot dip galvanised after fabrication and can then be powder coated if required.

When ordering a centre hinged column from A.D Coote we will ask that you supply us with the correct type and size of fittings to ensure the correct counter weights are installed.

Our Centre Hinged columns come standard to twenty metres but we will design and manufacture taller columns on request and regularly supply twenty five metre columns for sports applications as well as mine sites and transport yards

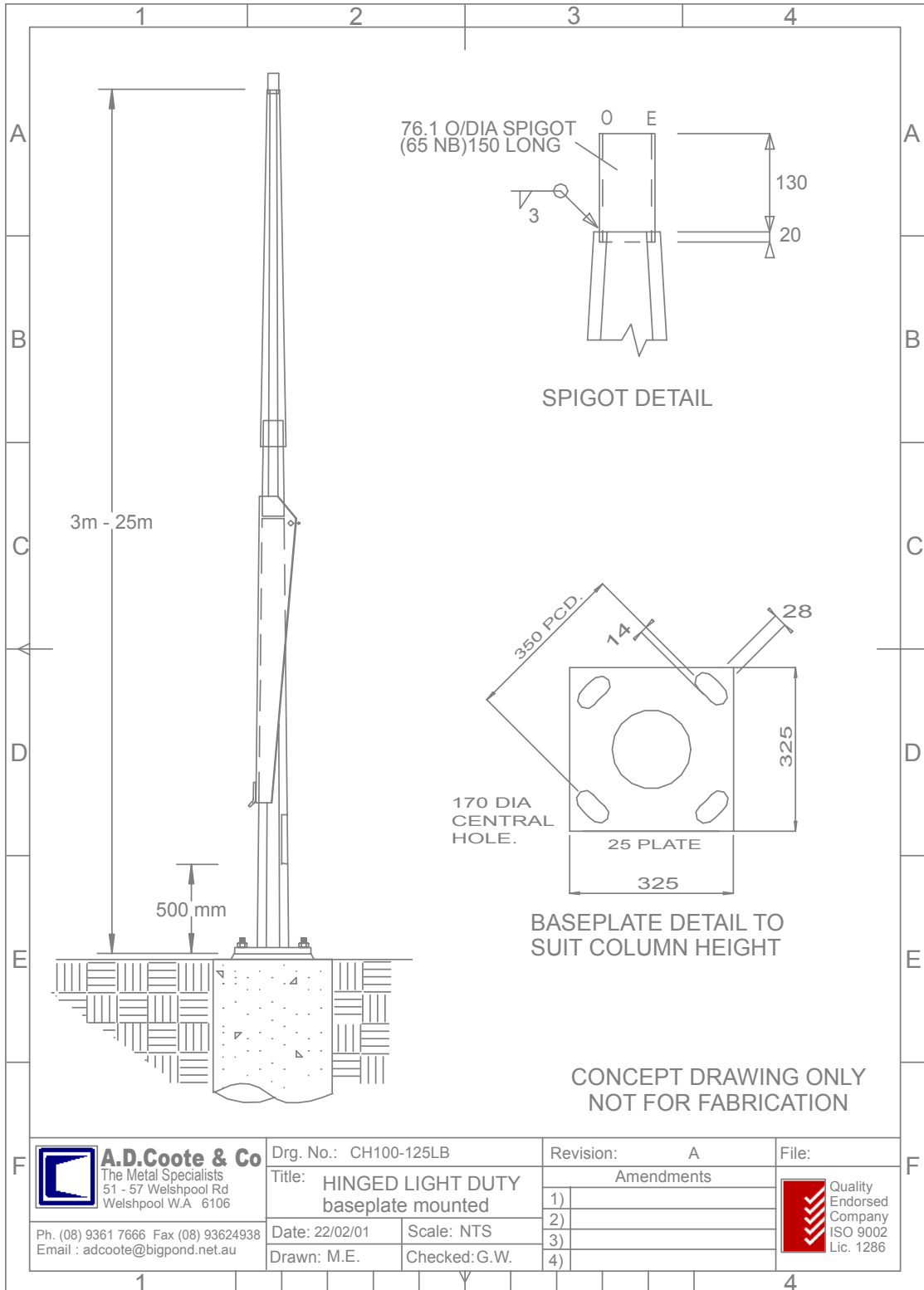


A.D.Coote & Company Pty. Ltd. offer a wide range of accessories and services including, but not limited to.

- Head Frames for single or multiple lighting arrangements
- Curved or Straight outreaches in single configuration or up to four arms
- Rag Bolts and cages with recommended footing sizes
- Camera Brackets or custom made brackets for other items such a speakers and signs
- Computer aided design facilities
- Assistance or organisation of installations
- Powder Coating or wet painting
- Delivery, including Hiab when prearranged (speak to our sales team)



Centre Hinged columns





Centre Hinged columns

Code	Height metres	A/F base mm	A/F top mm	Approx. Weight kg	Door Width	Door Height	Ragbolts
CH040LB	4	148	78	55	85	290	R250164
CH045LB	4.5	148	78	61	85	290	R250164
CH050LB	5	170	78	73	85	290	R250164
CH060LB	6	170	78	87	100	290	R250164
CH065LB	6.5	170	78	94	100	290	R250164
CH070LB	7	183	78	101	100	290	R350244
CH075LB	7.5	191	78	111	100	290	R350244
CH080LB	8	200	78	132	130	440	R350244
CH085LB	8.5	208	78	142	130	440	R350244
CH090LB	9	214	78	153	130	440	R350244
CH095LB	9.5	222	78	165	130	440	R350244
CH100LB	10	230	78	167	130	440	R350244
CH105LB	10.5	238	78	183	130	440	R350244
CH120LB	12	260	78	237	130	440	R350244
CH150LB	15	307	78	353	160	590	R350304
CH180LB	18	364	91	650	160	590	R500308
CH200LB	20	394	91	781	160	590	R500308

Product Codes

These tables displaying our standard range of Centre Hinged Columns are identified with the code on the left side of the chart (identified CH = centre hinged, 030 = height in metres, M or L = medium or light duty and B for base plate mount).

