

## Fixed In-ground mounted columns

A large proportion of the columns we supply to authorities in Western Australia, South Australia and Victoria are of the in-ground variety. Although the cost of installing these columns make them attractive it is important to ensure they are not being placed in an environment that consists of acidic soils as this can lead to a reduced life. The in ground part of the column can be coated with protective coating.

Our standard range of in ground mounted fixed columns are up to 12.5m in height and we tend to recommend base plate mounted columns for higher installations. All of our fixed in ground columns come with one standard access door, cable entry and a spigot to suit a head frame or light fitting. Another option is the columns can be fitted with a single or multi armed curved or straight outreach. All our columns are hot dip galvanised after fabrication and can then be powder coated if required.

We can also manufacture columns with a 12 sided or 16 sided format and have access to round tapered columns for larger orders. Please contact our sales office to discuss any of these special order items or if you have a design that you would like to have custom made.

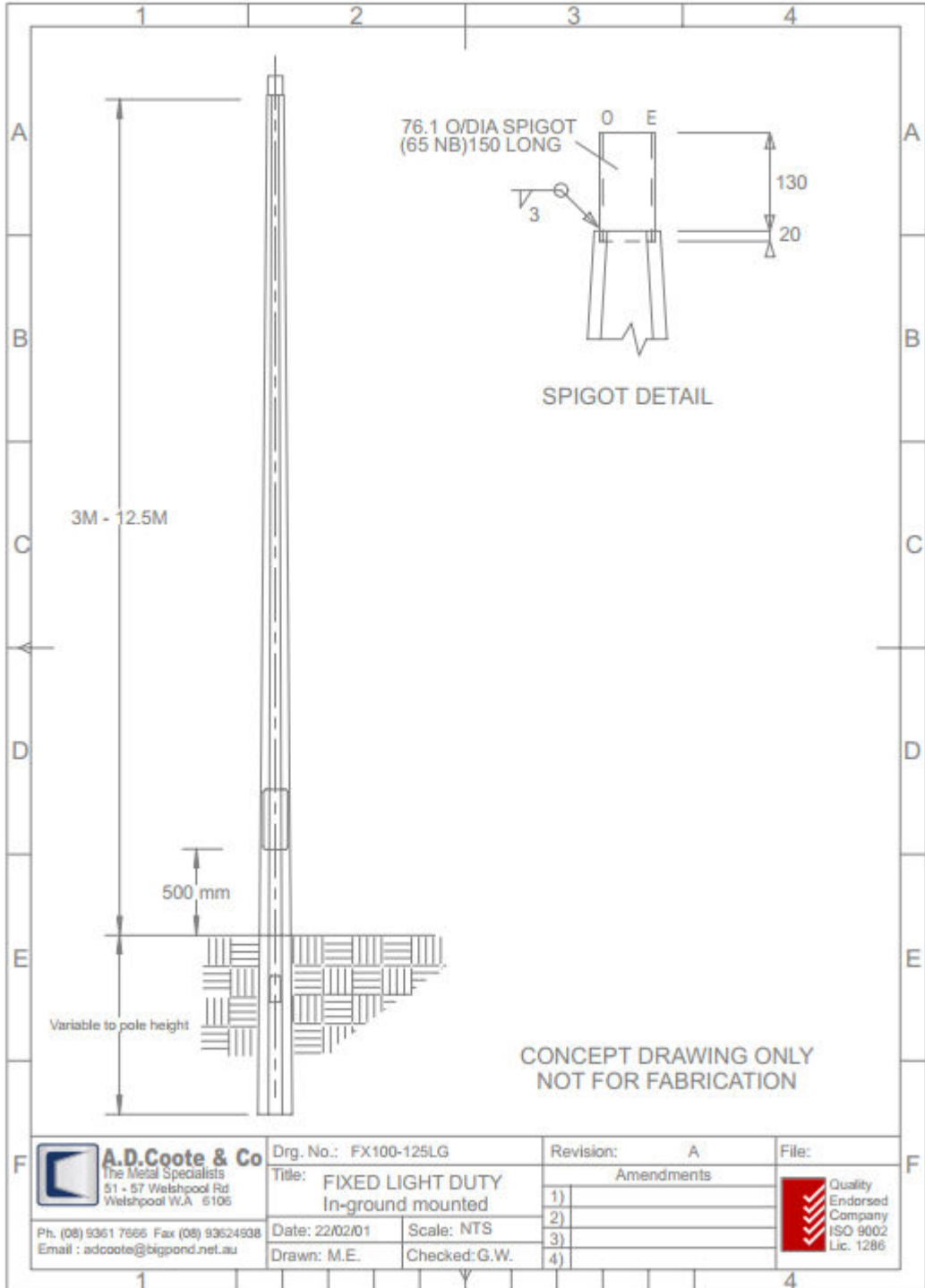




# A.D. COOTE & CO.

THE METAL SPECIALISTS

## Fixed In-ground mounted columns





# A.D. COOTE & CO.

THE METAL SPECIALISTS

## Fixed In-ground mounted columns

### Standard Duty

Code	Height metres	A/F GL mm	A/F top mm	Approx. Weight kg	Door Width	Door Height	Burial Depth M
FX030LG	3	122	78	31	85	290	1
FX035LG	3.5	129	78	37	85	290	1
FX040LG	4	136	78	42	85	290	1
FX045LG	4.5	145	78	48	100	290	1
FX050LG	5	153	78	54	100	290	1
FX055LG	5.5	157	78	59	100	290	1
FX060LG	6	164	78	72	100	290	2
FX065LG	6.5	171	78	79	130	440	2
FX070LG	7	185	78	89	130	440	2
FX075LG	7.5	193	78	97	130	440	2
FX080LG	8	198	78	104	130	440	2
FX085LG	8.5	206	78	113	130	440	2
FX090LG	9	214	78	121	130	440	2
FX095LG	9.5	217	78	128	130	440	2
FX100LG	10	227	78	138	160	590	2
FX105LG	10.5	240	78	149	160	590	2

### Product Codes

These tables displaying our standard range of Fixed In-ground Mounted Columns are identified with the code on the left side of the chart (identified FX = fixed, 030 = height in metres, M or L = medium or light duty and G for ground mount).

