

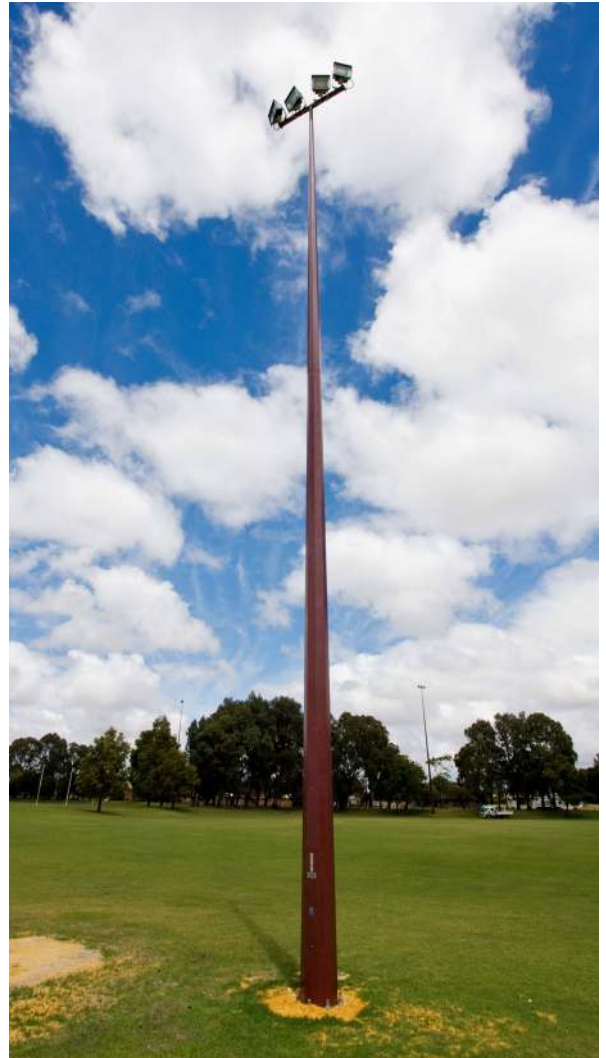


Fixed Base Plate mounted columns

Most columns used throughout Australia are of the fixed variety due to their reasonably low cost and easy accessibility with the wide range of cherry pickers that are available these days. Our standard range of base plate mounted fixed columns are up to 30m in height but we are able to quote and supply columns up to a height of 50m. We also manufacture direct burial fixed columns but we limit the mounting height of these columns to 12.5 metres.

All of our fixed columns come with one standard access door, baseplate or cable entry and a spigot to suit a head frame or light fitting. Another option is the columns can be fitted with a single or multi armed curved or straight outreach. All our columns are hot dip galvanised after fabrication and can then be powder coated if required.

We can also manufacture columns with a 12 sided or 16 sided format and have access to round tapered columns for larger orders. Please contact our sales office to discuss any of these special order items or if you have a design that you would like to have custom made.

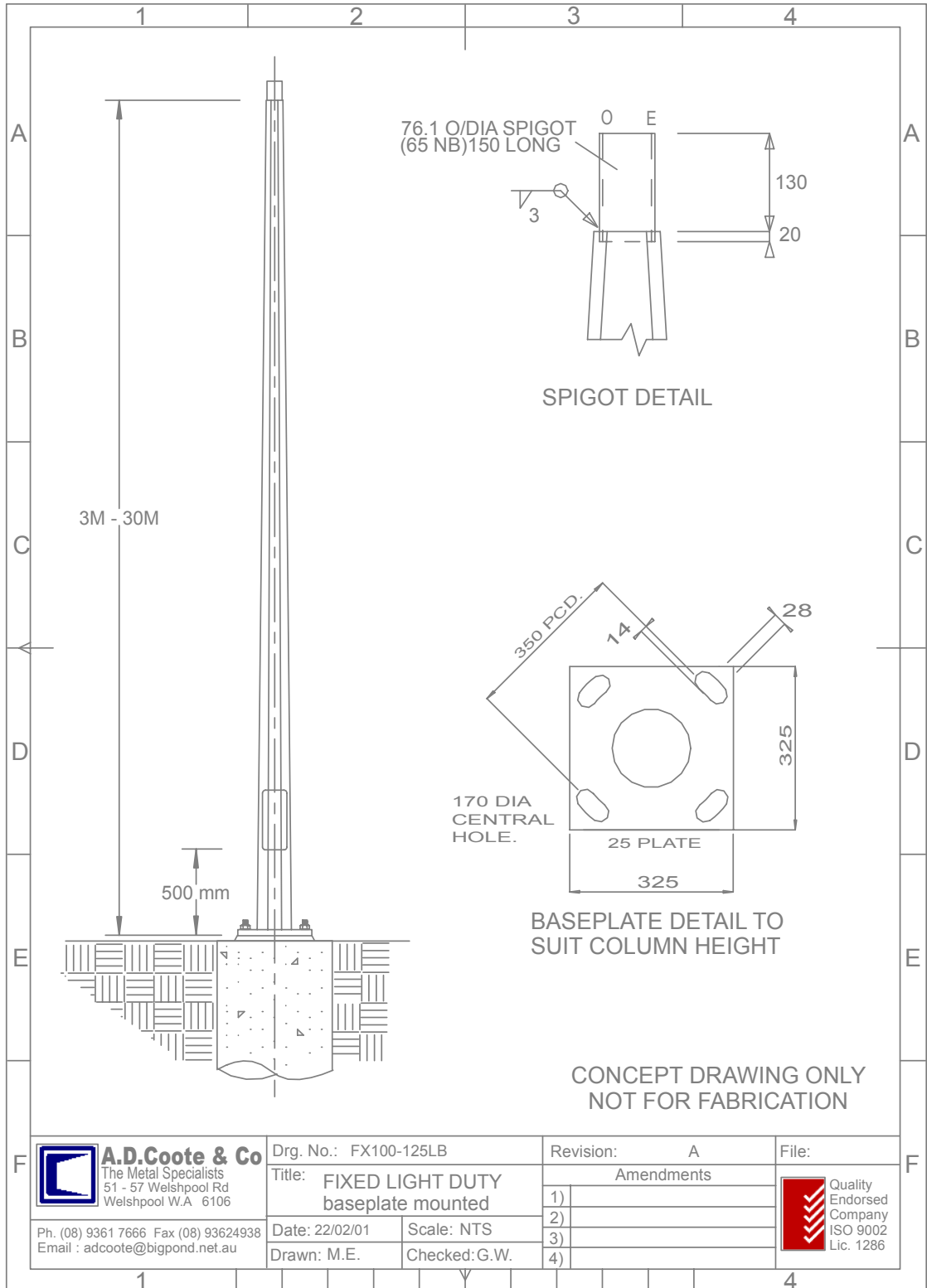


A.D.Coote & Company Pty. Ltd. offer a wide range of accessories and services including, but not limited to.

- Head Frames for single or multiple lighting arrangements
- Curved or Straight outreaches in single configuration or up to four arms
- Rag Bolts and cages with recommended footing sizes
- Camera Brackets or custom made brackets for other items such a speakers and signs
- Computer aided design facilities
- Assistance or organisation of installations
- Powder Coating or wet painting
- Delivery, including Hiab when prearranged (speak to our sales team)



Fixed Base Plate mounted columns





Fixed Base Plate mounted columns / Light Duty

Code	Height metres	A/F base mm	A/F top mm	Approx. Weight kg	Door Width	Door Height	Ragbolts
FX030LB	3	121	78	29	85	290	R250164
FX035LB	3.5	128	78	33	85	290	R250164
FX040LB	4	135	78	38	85	290	R250164
FX045LB	4.5	142	78	43	100	290	R250164
FX050LB	5	149	78	49	100	290	R250164
FX055LB	5.5	157	78	54	100	290	R250164
FX060LB	6	164	78	60	100	290	R250164
FX065LB	6.5	171	78	66	130	440	R250164
FX070LB	7	186	78	82	130	440	R350244
FX075LB	7.5	193	78	88	130	440	R350244
FX080LB	8	201	78	96	130	440	R350244
FX085LB	8.5	210	78	104	130	440	R350244
FX090LB	9	216	78	111	130	440	R350244
FX095LB	9.5	224	78	122	130	440	R350244
FX100LB	10	232	78	131	160	590	R350244
FX105LB	10.5	240	78	139	160	590	R350244
FX110LB	11	250	78	149	160	590	R350244
FX115LB	11.5	258	78	159	160	590	R350244
FX120LB	12	265	78	168	160	590	R350244
FX125LB	12.5	272	78	178	160	590	R350244
FX130LB	13	280	78	209	160	590	R500304
FX135LB	13.5	288	78	243	160	590	R500304
FX140LB	14	294	78	254	200	590	R500304
FX145LB	14.5	299	78	265	200	590	R500304
FX150LB	15	308	78	278	200	590	R500304
FX155LB	15.5	318	78	293	200	590	R500304
FX160LB	16	325	78	305	200	590	R500304
FX165LB	16.5	329	78	316	200	590	R500304
FX170LB	17	351	91	425	200	590	R500308
FX175LB	17.5	360	91	445	200	590	R500308
FX180LB	18	369	91	465	200	590	R500308
FX185LB	18.5	378	91	485	200	590	R500308
FX190LB	19	387	91	506	200	590	R500308
FX195LB	19.5	396	91	541	200	590	R500308
FX200LB	20	397	91	560	200	590	R500308
FX210LB	21	413	91	599	200	590	R550308
FX220LB	22	456	106	816	200	590	R600308
FX230LB	23	480	106	885	200	590	R600308
FX240LB	24	500	106	964	200	590	R600308
FX250LB	25	592	150	1,232	200	590	R750308



Fixed Base Plate mounted columns / Medium Duty

Code	Height metres	A/F base mm	A/F top mm	Approx. Weight kg	Door Width	Door Height	Ragbolts
FX030MB	3	121	78	33	85	290	R250164
FX035MB	3.5	128	78	39	85	290	R250164
FX040MB	4	135	78	44	85	290	R250164
FX045MB	4.5	142	78	50	100	290	R250164
FX050MB	5	149	78	57	100	290	R250164
FX055MB	5.5	157	78	64	100	290	R250164
FX060MB	6	164	78	71	100	290	R250164
FX065MB	6.5	171	78	78	130	440	R250164
FX070MB	7	186	78	95	130	440	R350244
FX075MB	7.5	193	78	103	130	440	R350244
FX080MB	8	201	78	112	130	440	R350244
FX085MB	8.5	210	78	122	130	440	R350244
FX090MB	9	216	78	130	130	440	R350244
FX095MB	9.5	224	78	144	130	440	R350244
FX100MB	10	232	78	158	160	590	R350304
FX105MB	10.5	240	78	168	160	590	R350304
FX110MB	11	250	78	180	160	590	R350304
FX115MB	11.5	258	78	192	160	590	R350304
FX120MB	12	265	78	203	160	590	R350304
FX125MB	12.5	272	78	214	160	590	R350304
FX130MB	13	280	78	244	160	590	R500304
FX135MB	13.5	288	78	302	160	590	R500304
FX140MB	14	294	78	304	200	590	R500304
FX145MB	14.5	299	78	325	200	590	R500304
FX150MB	15	308	78	333	200	590	R500304
FX155MB	15.5	318	78	351	200	590	R500304
FX160MB	16	325	78	367	200	590	R500304
FX165MB	16.5	329	78	380	200	590	R500304
FX170MB	17	351	91	526	200	590	R500308
FX175MB	17.5	360	91	552	200	590	R500308
FX180MB	18	369	91	577	200	590	R500308
FX185MB	18.5	378	91	602	200	590	R500308
FX190MB	19	387	91	628	200	590	R500308
FX195MB	19.5	396	91	655	200	590	R500308
FX200MB	20	397	91	679	200	590	R500308

Product Codes

These tables displaying our standard range of Fixed Base Plate Mounted Columns are identified with the code on the left side of the chart (identified FX = fixed, 030 = height in metres, M or L = medium or light duty and B for base plate).